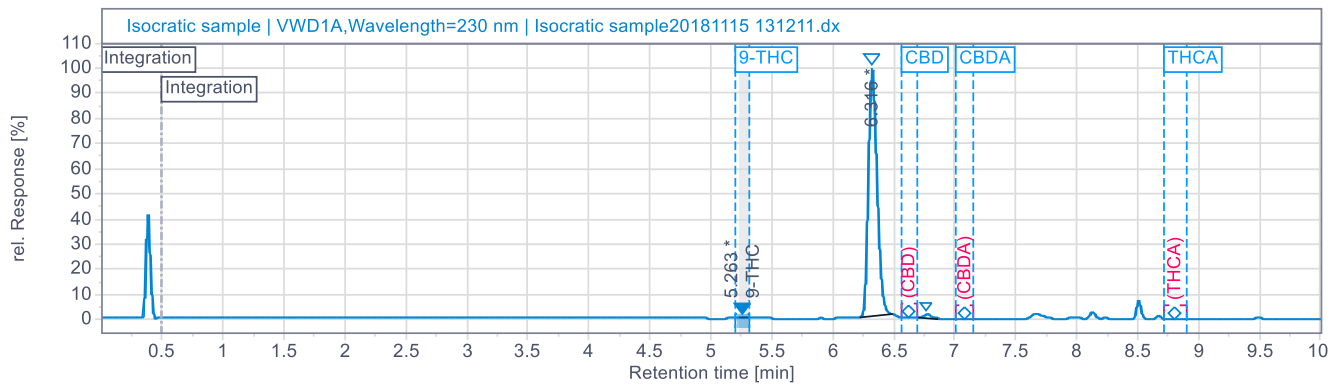


10mg/ml  
 Sample: SN#WSRPC-0001  
 Regular Water Soluble-REGULAR-PINA COLADA  
 Batch #:WSRCL-11142018  
 Sample Received: 11/14/2018; Report Created: 11/15/2018

**Cannabinoid Results**



**Product Image**



**Cannabinoid Profile**

% 9-THC	% CBD	% CBDA	% THCA
RT: 5.26 0.0107	RT: 6.31 1.0301 10.30 mg/ml	RT: 6.76 0.0693	RT: 8.81 ND

Spec : %RSD: ≤ 2.0                      Spec: USP Tailing: ≤ 2.0  
 Spec: Check STD Diff.: ≤ ±2.0%      Spec: Tangent Resolution: ≥ 2.0

