

# CERTIFICATE OF ANALYSIS

## ISO/IEC 17025:2017 ACCREDITATION #103104



Order #: 56321  
 Order Name: REG-VG Cloud-Lemon  
 Batch#: 10004705  
 Received: 06/18/2020  
 Completed: 06/25/2020



American Shaman  
 2405 Southwest Blvd  
 Kansas City Missouri, 64108  
 (913) 486-9889  
 info@cbdamericanshaman.com



### Sample



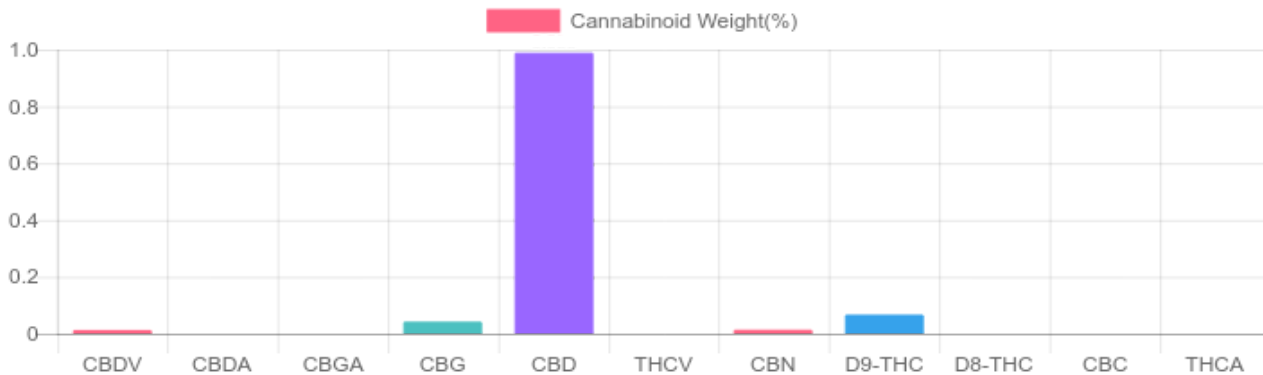
<b>0.067%</b> D9-THC	<b>0.989%</b> Total CBD
<b>425.4 mg</b> Cannabinoids per unit	<b>373.8 mg</b> CBD per unit

### Cannabinoids Test

SHIMADZU INTEGRATED UPLC-PDA  
 GSL SOP 400      PREPARED: 06/22/2020 13:54:30

Cannabinoids	LOQ	weight(%)	mg/g	mg/unit
D9-THC	10 PPM	0.067%	0.670	25.3
THCA	10 PPM	N/D	N/D	N/D
CBD	10 PPM	0.989%	9.890	373.8
CBDA	20 PPM	N/D	N/D	N/D
CBDV	20 PPM	0.013%	0.131	5.0
CBC	10 PPM	N/D	N/D	N/D
CBN	10 PPM	0.014%	0.141	5.3
CBG	10 PPM	0.042%	0.422	16.0
CBGA	20 PPM	N/D	N/D	N/D
D8-THC	10 PPM	N/D	N/D	N/D
THCV	10 PPM	N/D	N/D	N/D
TOTAL D9-THC		0.067%	0.067%	25.3
TOTAL CBD*		0.989%	9.890	373.8
TOTAL CANNABINOIDS		1.125%	11.254	425.4

1 unit = 30 ml per unit x density (1.26) x Cannabinoid concentration



Reporting Limit 10 ppm  
 \*Total CBD = CBD + CBDA x 0.877  
 N/D - Not Detected, B/LOQ - Below Limit of Quantification

Dr. Andrew Hall, Ph.D., Chief Scientific Officer

Ben Witten, MS, MT., Lab Director

**Green Scientific Labs**  
 info@greenscientificlabs.com  
 1-833 TEST CBD



Green Scientific Labs uses its best efforts to deliver high quality results and to verify that the data contained therein are based on sound scientific judgment and levels listed are guidelines only and all data was reported based on standard laboratory procedures and deviations. However Green Scientific Labs makes no warranties or claims to that effect and further shall not be liable for any damage or misrepresentation that may result from the use or misuse of the data contained herein in any way. Further, Green Scientific Labs makes no claims regarding representations of the analyzed sample to the larger batch from which it was taken. Data and information in this report are intended solely for the individual(s) for whom samples were submitted and as part of our strict confidentiality policy, Green Scientific Labs can only discuss results with the original client of record.

# CERTIFICATE OF ANALYSIS

## ISO/IEC 17025:2017 ACCREDITATION #103104



Order #: 56321  
 Order Name: REG-VG Cloud-Lemon  
 Batch#: 10004705  
 Received: 06/18/2020  
 Completed: 06/25/2020



American Shaman  
 2405 Southwest Blvd  
 Kansas City Missouri, 64108  
 (913) 486-9889  
 info@cbdamericanshaman.com



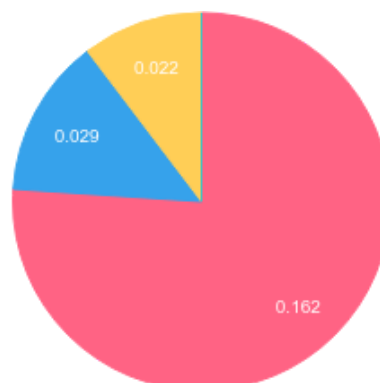
### TERPENES: TOTAL (0.213%)

GSL SOP 404  
 Prepared: 06/23/2020 16:44:38

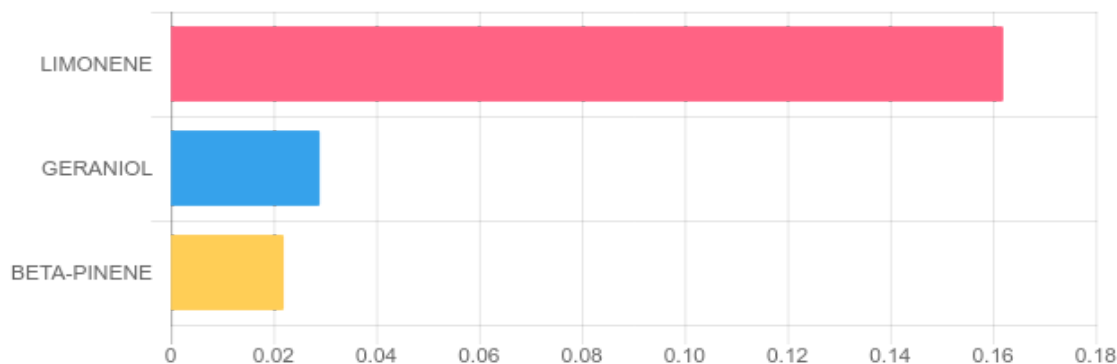
Headspace GCMS - Shimadzu GCMS QP2020 with HS20

Terpene	Results (%)	LOQ (%)	LOD (%)
BETA-PINENE	0.022%	0.0067%	0.0063%
GERANIOL	0.029%	0.0067%	0.0063%
LIMONENE	0.162%	0.0067%	0.0063%

### Terpenes Breakdown



### Top Terpenes Results:



### Tested for but not present:

ALPHA-PINENE, CAMPHENE, BETA-MYRCENE, 3-CARENE, ALPHA-TERPINENE, TRANS-BETA-OCIMENE, P-CYMENE, CIS-BETA-OCIMENE, EUCALYPTOL, GAMMA-TERPINENE, TERPINOLENE, LINALOOL, ISOPULEGOL, CARYOPHYLLENE, HUMULENE, CIS-NEROLIDOL, TRANS-NEROLIDOL, GUAJOL, CARYOPHYLLENE OXIDE, ALPHA-BISABOLOL

Dr. Andrew Hall, Ph.D., Chief Scientific Officer

Ben Witten, MS, MT., Lab Director

**Green Scientific Labs**  
 info@greenscientificlabs.com  
 1-833-TEST-CBD



Green Scientific Labs uses its best efforts to deliver high quality results and to verify that the data contained therein are based on sound scientific judgment and levels listed are guidelines only and all data was reported based on standard laboratory procedures and deviations. However Green Scientific Labs makes no warranties or claims to that effect and further shall not be liable for any damage or misrepresentation that may result from the use or misuse of the data contained herein in any way. Further, Green Scientific Labs makes no claims regarding representations of the analyzed sample to the larger batch from which it was taken. Data and information in this report are intended solely for the individual(s) for whom samples were submitted and as part of our strict confidentiality policy, Green Scientific Labs can only discuss results with the original client of record.

# CERTIFICATE OF ANALYSIS

## ISO/IEC 17025:2017 ACCREDITATION #103104



Order #: 56321  
 Order Name: REG-VG Cloud-Lemon  
 Batch#: 10004705  
 Received: 06/18/2020  
 Completed: 06/25/2020



American Shaman  
 2405 Southwest Blvd  
 Kansas City Missouri, 64108  
 (913) 486-9889  
 info@cbdamericanshaman.com



### PESTICIDE ANALYSIS:

GSL SOP 401

PREPARED: 06/19/2020 11:11:13

GCMS-MS - Shimadzu GCMS-TQ8040

Pesticide	Action Level (ppm)	Results (ppm)	LOQ (ppm)	LOD (ppm)
CAPTAN	0.700	N/D	0.003	0.001
CHLORDANE	0.100	N/D	0.003	0.001
CHLORFENAPYR	0.100	N/D	0.003	0.001
COUMAPHOS	0.100	N/D	0.003	0.001

Pesticide	Action Level (ppm)	Results (ppm)	LOQ (ppm)	LOD (ppm)
CYFLUTHRIN	2.000	N/D	0.003	0.001
CYPERMETHRIN	1.000	N/D	0.003	0.001
PARATHION-METHYL	0.100	N/D	0.003	0.001
PENTACHLORONITROBENZENE	0.100	N/D	0.003	0.001

LCMS-MS - Shimadzu LCMS-8060

Pesticide	Action Level (ppm)	Results (ppm)	LOQ (ppm)	LOD (ppm)
ABAMECTIN B1A	0.100	N/D	0.005	0.001
ACEPHATE	0.100	N/D	0.001	0.001
ACEQUINOCYL	0.100	N/D	0.001	0.001
ACETAMIPRID	0.100	N/D	0.005	0.001
ALDICARB	0.100	N/D	0.005	0.001
AZOXYSTROBIN	0.100	N/D	0.001	0.001
BIFENAZATE	0.100	N/D	0.005	0.001
BIFENTHRIN	3.000	N/D	0.005	0.001
BOSCALID	0.100	N/D	0.005	0.001
CARBARYL	0.500	N/D	0.003	0.001
CARBOFURAN	0.100	N/D	0.001	0.001
CHLORANTRANILIPROLE	10.000	N/D	0.005	0.005
CHLORPYRIFOS	0.100	0.011	0.001	0.001
CLOFENTEZINE	0.100	N/D	0.001	0.001
DAMINOZIDE	0.100	N/D	0.005	0.001
DIAZINON	0.100	N/D	0.001	0.001
DICHLORVOS	0.100	N/D	0.005	0.001
DIMETHOATE	0.100	N/D	0.001	0.001
DIMETHOMORPH	2.000	N/D	0.005	0.001
ETHOPROPHOS	0.100	N/D	0.001	0.001
ETOFENPROX	0.100	N/D	0.001	0.001
ETOXAZOLE	0.100	N/D	0.010	0.005
FENHEXAMID	0.100	N/D	0.005	0.001
FENOXYCARB	0.100	N/D	0.005	0.001
FENPYROXIMATE	0.100	N/D	0.001	0.001
FIPRONIL	0.100	N/D	0.003	0.001
FLONICAMID	0.100	N/D	0.025	0.010
FLUDIOXONIL	0.100	N/D	0.003	0.001
HEXYTHIAZOX	0.100	N/D	0.005	0.001
IMAZALIL	0.100	N/D	0.005	0.001

Pesticide	Action Level (ppm)	Results (ppm)	LOQ (ppm)	LOD (ppm)
IMIDACLOPRID	5.000	N/D	0.005	0.001
KRESOXIM-METHYL	0.100	N/D	0.010	0.005
MALATHION	0.500	N/D	0.005	0.001
METALAXYL	2.000	N/D	0.001	0.001
METHIOCARB	0.100	N/D	0.005	0.001
METHOMYL	1.000	N/D	0.001	0.001
MEVINPHOS	0.100	N/D	0.001	0.001
MYCLOBUTANIL	0.100	N/D	0.005	0.001
NALED	0.100	N/D	0.005	0.001
OXAMYL	0.500	N/D	0.001	0.001
PACLOBUTRAZOL	0.100	N/D	0.005	0.001
PERMETHRINS	0.500	N/D	0.005	0.001
PHOSMET	0.100	N/D	0.005	0.001
PIPERONYL BUTOXIDE	3.000	N/D	0.001	0.001
PRALLETHRIN	0.100	N/D	0.005	0.005
PROPICONAZOLE	0.100	N/D	0.010	0.005
PROPOXUR	0.100	N/D	0.001	0.001
PYRETHRINS (PYRETHRIN I)	0.500	N/D	0.005	0.005
PYRIDABEN	0.100	N/D	0.005	0.001
SPINETORAM	0.100	N/D	0.001	0.001
SPINOSAD	0.100	N/D	0.001	0.001
SPIROMESIFEN	0.100	N/D	0.005	0.001
SPIROTETRAMAT	0.100	N/D	0.001	0.001
SPIROXAMINE	0.100	N/D	0.001	0.001
TEBUCONAZOLE	0.100	N/D	0.005	0.001
THIACLOPRID	0.100	N/D	0.001	0.001
THIAMETHOXAM	5.000	N/D	0.001	0.001
TRIFLOXYSTROBIN	0.100	N/D	0.001	0.001

N/D = Not Detected, A/LOQ = Above LOQ Level, B/LOQ = Below LOQ Level, B/LOD = Below LOD Level

  
 Dr. Andrew Hall, Ph.D., Chief Scientific Officer

  
 Ben Witten, MS, MT., Lab Director

**Green Scientific Labs**  
 info@greenscientificlabs.com  
 1-833 TEST CBD



Green Scientific Labs uses its best efforts to deliver high quality results and to verify that the data contained therein are based on sound scientific judgment and levels listed are guidelines only and all data was reported based on standard laboratory procedures and deviations. However Green Scientific Labs makes no warranties or claims to that effect and further shall not be liable for any damage or misrepresentation that may result from the use or misuse of the data contained herein in any way. Further, Green Scientific Labs makes no claims regarding representations of the analyzed sample to the larger batch from which it was taken. Data and information in this report are intended solely for the individual(s) for whom samples were submitted and as part of our strict confidentiality policy, Green Scientific Labs can only discuss results with the original client of record.

# CERTIFICATE OF ANALYSIS

## ISO/IEC 17025:2017 ACCREDITATION #103104



Order #: 56321  
 Order Name: REG-VG Cloud-Lemon  
 Batch#: 10004705  
 Received: 06/18/2020  
 Completed: 06/25/2020



American Shaman  
 2405 Southwest Blvd  
 Kansas City Missouri, 64108  
 (913) 486-9889  
 info@cbdamericanshaman.com



### RESIDUAL SOLVENTS:

Headspace GCMS - Shimadzu GCMS QP2020 with HS20

GSL SOP 405

Prepared: 06/19/2020 17:04:44

Residual Solvent	Action Level (ppm)	Results (ppm)	LOQ (ppm)	LOD (ppm)
1,1-DICHLOROETHENE	8	N/D	0.63	0.63
1,2- DICHLOROETHANE	2	N/D	0.12	0.02
ACETONE	5,000	N/D	140	20
ACETONITRILE	410	N/D	25	1
BENZENE	1	N/D	1	0.5
BUTANE	5,000	N/D	50	10
CHLOROFORM	1	N/D	1	0.5
CIS 1,2-DICHLOROETHENE	5	N/D	0.73	0.18
ETHANOL	5,000	N/D	140	20
ETHYL ACETATE	5,000	N/D	140	20
ETHYL ETHER	5,000	N/D	140	20
ETHYLENE OXIDE	1	N/D	0	0
ISOPROPYL ALCOHOL	5,000	N/D	140	20
METHANOL	3,000	N/D	100	20
METHYLENE CHLORIDE	125	N/D	0.15	0.15
N-HEPTANE	5,000	N/D	140	20
N-HEXANE	290	N/D	18	10
PENTANE	5,000	N/D	140	20
PROPANE	5,000	N/D	20	1
TOLUENE	890	N/D	53	1
TRANS 1,2-DICHLOROETHENE	5	N/D	0.73	0.18
TRICHLOROETHENE	1	N/D	1	0.5
XYLENES	150	N/D	130	20

Dr. Andrew Hall, Ph.D., Chief Scientific Officer

Ben Witten, MS, MT., Lab Director

**Green Scientific Labs**  
 info@greenscientificlabs.com  
 1-833 TEST CBD



Green Scientific Labs uses its best efforts to deliver high quality results and to verify that the data contained therein are based on sound scientific judgment and levels listed are guidelines only and all data was reported based on standard laboratory procedures and deviations. However Green Scientific Labs makes no warranties or claims to that effect and further shall not be liable for any damage or misrepresentation that may result from the use or misuse of the data contained herein in any way. Further, Green Scientific Labs makes no claims regarding representations of the analyzed sample to the larger batch from which it was taken. Data and information in this report are intended solely for the individual(s) for whom samples were submitted and as part of our strict confidentiality policy, Green Scientific Labs can only discuss results with the original client of record.

# CERTIFICATE OF ANALYSIS

## ISO/IEC 17025:2017 ACCREDITATION #103104



Order #: 56321  
 Order Name: REG-VG Cloud-Lemon  
 Batch#: 10004705  
 Received: 06/18/2020  
 Completed: 06/25/2020



American Shaman  
 2405 Southwest Blvd  
 Kansas City Missouri, 64108  
 (913) 486-9889  
 info@cbdamericanshaman.com



### Microbial Analysis:

Microbial Analysis GSL SOP 406

Uploaded: 06/24/2020 09:46:39

PCR - Agilent AriaMX

Test	Test Method Used	Device Used	LOD	Allowable Criteria	Actual Result	Pass/Fail
STEC E.COLI*	USP 61/62†	ARIAMX PCR	2 COPIES OF DNA	PRESENCE / ABSENT	BELOW LOD	PASS
SALMONELLA*	USP 61/62†	ARIAMX PCR	5 COPIES OF DNA	PRESENCE / ABSENT	BELOW LOD	PASS
ASPERGILLUS	USP 61/62†	ARIAMX PCR	ASP_LOD***	PRESENCE / ABSENT	BELOW LOD	PASS
YEAST AND MOLD	USP 61/62†	ARIAMX PCR	363.05518 CFU/G**	1,000	BELOW THRESHOLD	PASS
TOTAL AEROBIC BACTERIA	USP 61/62†	ARIAMX PCR	0.25316 CFU/G**	10,000	BELOW THRESHOLD	PASS
COLIFORM	USP 61/62†	ARIAMX PCR	3.41539 CFU/G**	100	BELOW THRESHOLD	PASS
ENTEROBACTERIACEAE	USP 61/62†	ARIAMX PCR	0.32951 CFU/G**	100	BELOW THRESHOLD	PASS

† USP 61 (enumeration of bacteria TAC, TYM, and ENT/Coliform), USP 62 (identifying specific species E.coli Aspergillus etc)

\* STEC and Salmonella run as Multiplex

\*\* CFU/g Calculation based on Select Category Type Gummy MIP/Extract Flower matrix

\*\*\* Flavus = 2 Copies of DNA / Fumigatis = 2 Copies of DNA Niger = 20 Copies of DNA / Terrus = 10 copies of DNA

Dr. Andrew Hall, Ph.D., Chief Scientific Officer

Ben Witten, MS, MT., Lab Director

**Green Scientific Labs**  
 info@greenscientificlabs.com  
 1-833 TEST CBD



Green Scientific Labs uses its best efforts to deliver high quality results and to verify that the data contained therein are based on sound scientific judgment and levels listed are guidelines only and all data was reported based on standard laboratory procedures and deviations. However Green Scientific Labs makes no warranties or claims to that effect and further shall not be liable for any damage or misrepresentation that may result from the use or misuse of the data contained herein in any way. Further, Green Scientific Labs makes no claims regarding representations of the analyzed sample to the larger batch from which it was taken. Data and information in this report are intended solely for the individual(s) for whom samples were submitted and as part of our strict confidentiality policy, Green Scientific Labs can only discuss results with the original client of record.

# CERTIFICATE OF ANALYSIS

## ISO/IEC 17025:2017 ACCREDITATION #103104



Order #: 56321  
Order Name: REG-VG Cloud-Lemon  
Batch#: 10004705  
Received: 06/18/2020  
Completed: 06/25/2020



American Shaman  
2405 Southwest Blvd  
Kansas City Missouri, 64108  
(913) 486-9889  
info@cbdamericanshaman.com



### Heavy Metals Analysis:

ICP-MS - Shimadzu ICPMS-2030  
GSL SOP 403

Uploaded: 06/22/2020 14:21:58

Metal	Action Level (ppb)	Result (ppb)
ARSENIC (AS)	200	B/LOQ
CADMIUM (CD)	200	B/LOQ
MERCURY (HG)	100	B/LOQ
LEAD (PB)	500	B/LOQ

Lower Limit of Quantitation (LOQ) is 75 ppb

Dr. Andrew Hall, Ph.D., Chief Scientific Officer

Ben Witten, MS, MT., Lab Director

Green Scientific Labs  
info@greenscientificlabs.com  
1-833 TEST CBD



Green Scientific Labs uses its best efforts to deliver high quality results and to verify that the data contained therein are based on sound scientific judgment and levels listed are guidelines only and all data was reported based on standard laboratory procedures and deviations. However Green Scientific Labs makes no warranties or claims to that effect and further shall not be liable for any damage or misrepresentation that may result from the use or misuse of the data contained herein in any way. Further, Green Scientific Labs makes no claims regarding representations of the analyzed sample to the larger batch from which it was taken. Data and information in this report are intended solely for the individual(s) for whom samples were submitted and as part of our strict confidentiality policy, Green Scientific Labs can only discuss results with the original client of record.